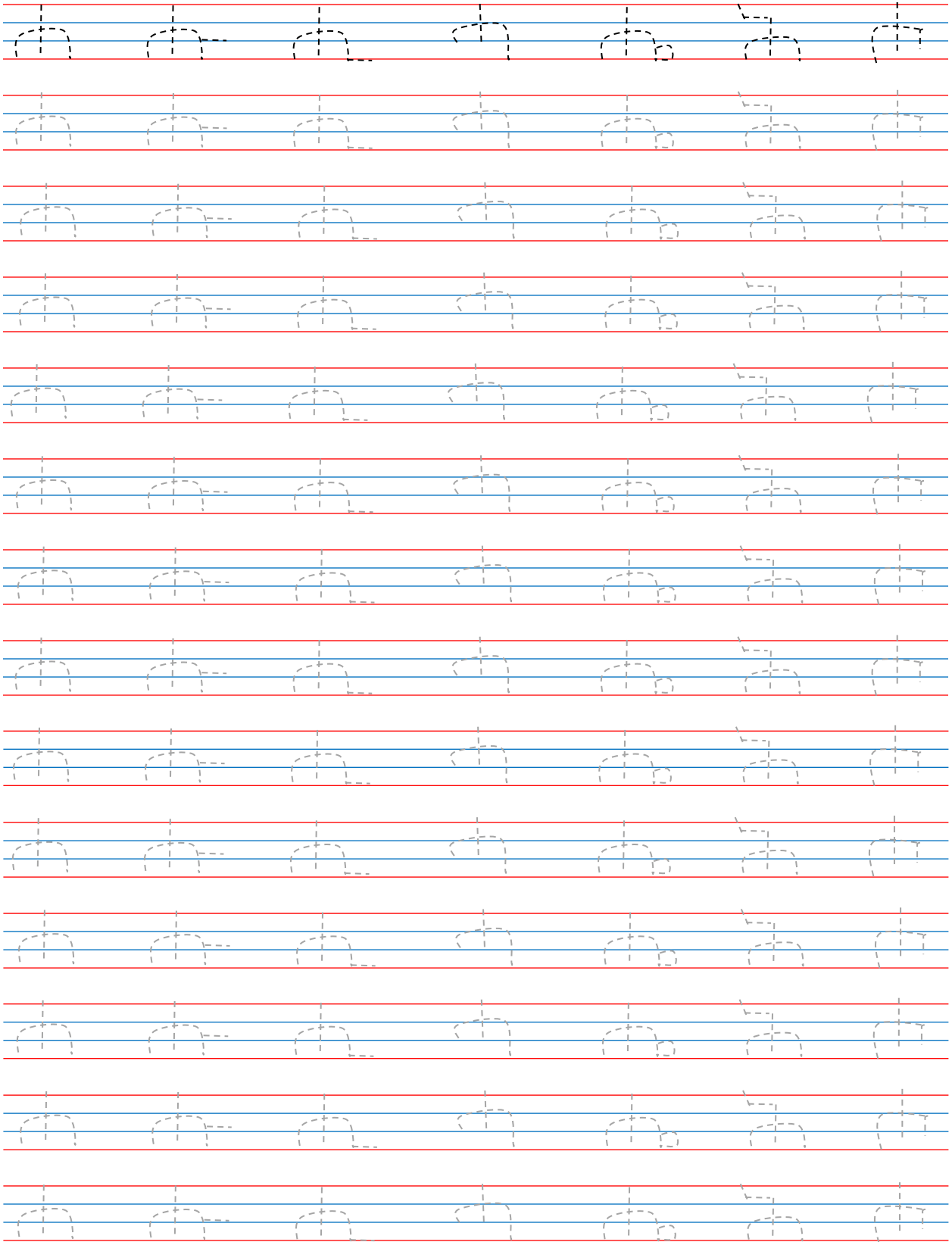


ሀ ሁ ሂ ሃ ሄ ህ ሆ

Handwriting practice sheet for Amharic characters ሀ, ሁ, ሂ, ሃ, ሄ, ህ, ሆ. The sheet consists of 14 rows of handwriting lines (red top and bottom lines, blue middle line). Each row contains seven columns of characters. The first row shows the characters in solid black. The following 13 rows show the characters in dashed lines for tracing. Each character in the dashed rows includes a small number (1, 2, or 3) and an arrow indicating the stroke order and direction.

Handwriting practice sheet for Amharic characters. The top row shows seven characters in solid black: ለ, ተ, ሊ, ላ, ለ, ል, ተ. Below this are 14 rows of handwriting practice. Each row contains seven characters, each on a set of three horizontal lines (top red, middle blue, bottom red). The characters are arranged in columns: the first three columns contain ለ, ተ, and ሊ; the next three columns contain ላ, ለ, and ል; and the final column contains ተ. The first row of practice is dashed for tracing, while the subsequent 13 rows are solid for independent practice.

ሐ ሐ ሐ ሐ ሐ ሐ ሐ



መ ደ ዳ ዳ ዳ ዳ ዳ

Handwriting practice sheet for Amharic characters. The first row shows the characters in solid black. The following 15 rows show the characters in dashed lines for tracing on a four-line grid. The characters are arranged in columns: 'መ' (7 rows), 'ደ' (7 rows), 'ዳ' (7 rows), 'ዳ' (7 rows), 'ዳ' (7 rows), 'ዳ' (7 rows), and 'ዳ' (7 rows).

ረ ሩ ሪ ራ ራ ራ ራ

Handwriting practice sheet for Amharic characters. The sheet consists of 15 rows. Each row contains seven columns of characters. The first row shows the solid characters: ረ, ሩ, ሪ, ራ, ራ, ራ, ራ. The following 14 rows contain dashed versions of these characters for tracing. Each character is positioned between a top blue line and a bottom red line. The characters are arranged in a grid: Row 1: Solid characters; Row 2-15: Dashed characters for tracing.

ሰ

ሱ

ሲ

ሳ

ሴ

ስ

ሶ

Handwriting practice sheet for Amharic characters. The page contains 14 rows of handwriting lines. Each row consists of four horizontal lines: a top red line, two middle blue lines, and a bottom red line. The first row features seven solid black characters: ሰ, ሱ, ሲ, ሳ, ሴ, ስ, and ሶ. The subsequent 13 rows each contain seven dashed versions of the same characters for tracing. The characters are arranged in a grid across the rows.

ከ

ክ

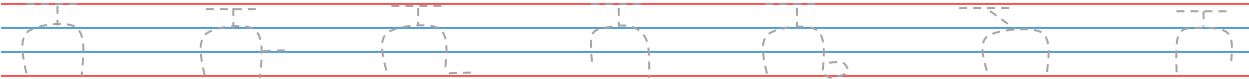
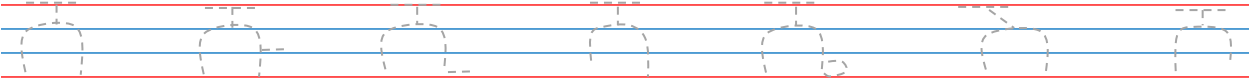
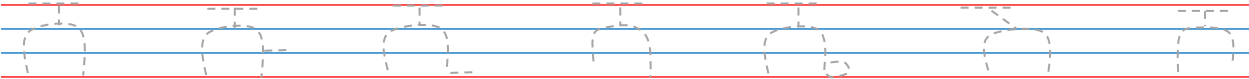
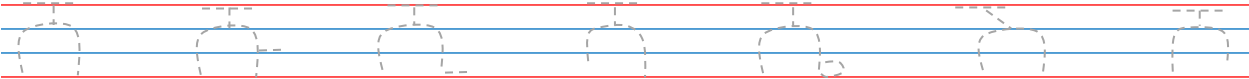
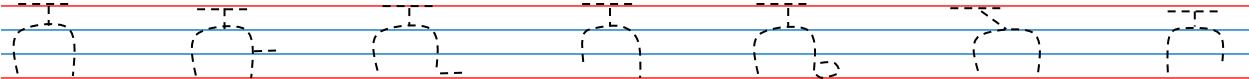
ኸ

ከ

ከ

ከ

ከ



ቀ

ቁ

ቂ

ቃ

ቄ

ቅ

ቆ

Handwriting practice sheet for Amharic characters. The page contains 15 rows of handwriting lines. Each row consists of four horizontal lines: a top red line, two middle blue lines, and a bottom red line. The first row displays the seven characters in solid black. The following 14 rows each contain seven dashed versions of the characters for tracing. The characters are arranged in columns: the first six columns correspond to the characters 'ቀ', 'ቁ', 'ቂ', 'ቃ', 'ቄ', and 'ቅ', and the seventh column corresponds to 'ቆ'. Each character is centered between the two middle blue lines.



ቆ

ቆ

ቆ

ቆ

ቆ

ቆ

ቆ

Handwriting practice grid for the Amharic letter 'ቆ'. The grid consists of 14 rows. Each row contains seven dashed outlines of the letter 'ቆ' on a set of four horizontal lines (top red, middle blue, bottom blue, bottom red). The first row is the only one where the letter is solid black. The second row contains a solid 'ቆ' followed by six dashed 'ቆ's. The remaining 12 rows contain seven dashed 'ቆ's each, intended for tracing.

በ ቡ ቢ ከ ቤ ከ

Handwriting practice sheet for Amharic characters. The page contains 15 rows of handwriting lines. Each row consists of four horizontal lines: a top red line, a middle blue line, a bottom blue line, and a bottom red line. The first row shows the characters in solid black. The following 14 rows show the characters in dashed lines for tracing. The characters are arranged in columns: the first column contains 'በ', the second 'ቡ', the third 'ቢ', the fourth 'ከ', the fifth 'ቤ', the sixth 'ከ', and the seventh 'ከ'. Each character has a small arrow and a number indicating the starting point and direction of the stroke.

ተ ቱ ት ታ ቴ ቶ ቶ



干

𠄎

𠄏

𠄐

𠄑

𠄒

𠄓

Handwriting practice sheet for the Chinese character '干' (gān). The page features 14 rows of horizontal lines (red top and bottom lines, blue middle lines). Each row contains seven columns of dashed characters for tracing. The first row shows the solid characters: 干, 𠄎, 𠄏, 𠄐, 𠄑, 𠄒, 𠄓. The subsequent rows contain dashed versions of these characters for tracing. Small arrows and numbers (1, 2) are placed near the characters to indicate the correct stroke order and direction for writing.

Г

Г

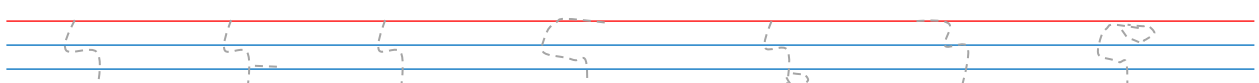
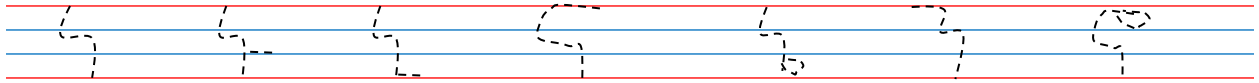
Г

Г

Г

Г

Г



ኘ

ኘ

ኘ

ኘ

ኘ

ኘ

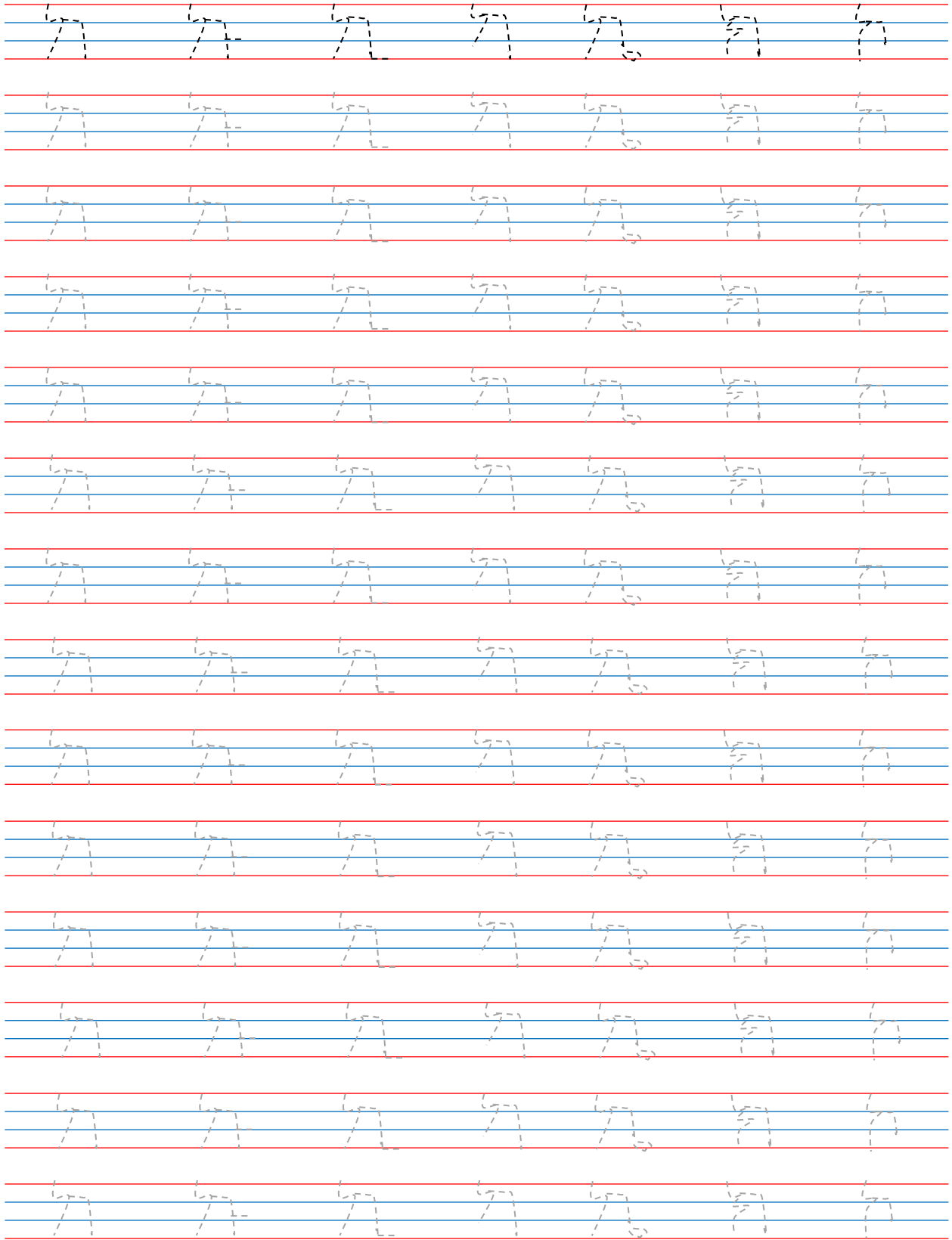
ኘ

Handwriting practice sheet for the Amharic letter 'ኘ' (x). The page contains 15 rows of handwriting lines. Each row consists of four horizontal lines: a top red line, a middle blue line, a bottom blue line, and a bottom red line. The letter 'ኘ' is shown in solid black at the top of each row, followed by a dashed version for tracing. The first row shows the letter in solid black, while the subsequent 14 rows show it in dashed lines for tracing practice.

ኀ ኁ ኂ ኃ ኄ ኅ ኆ

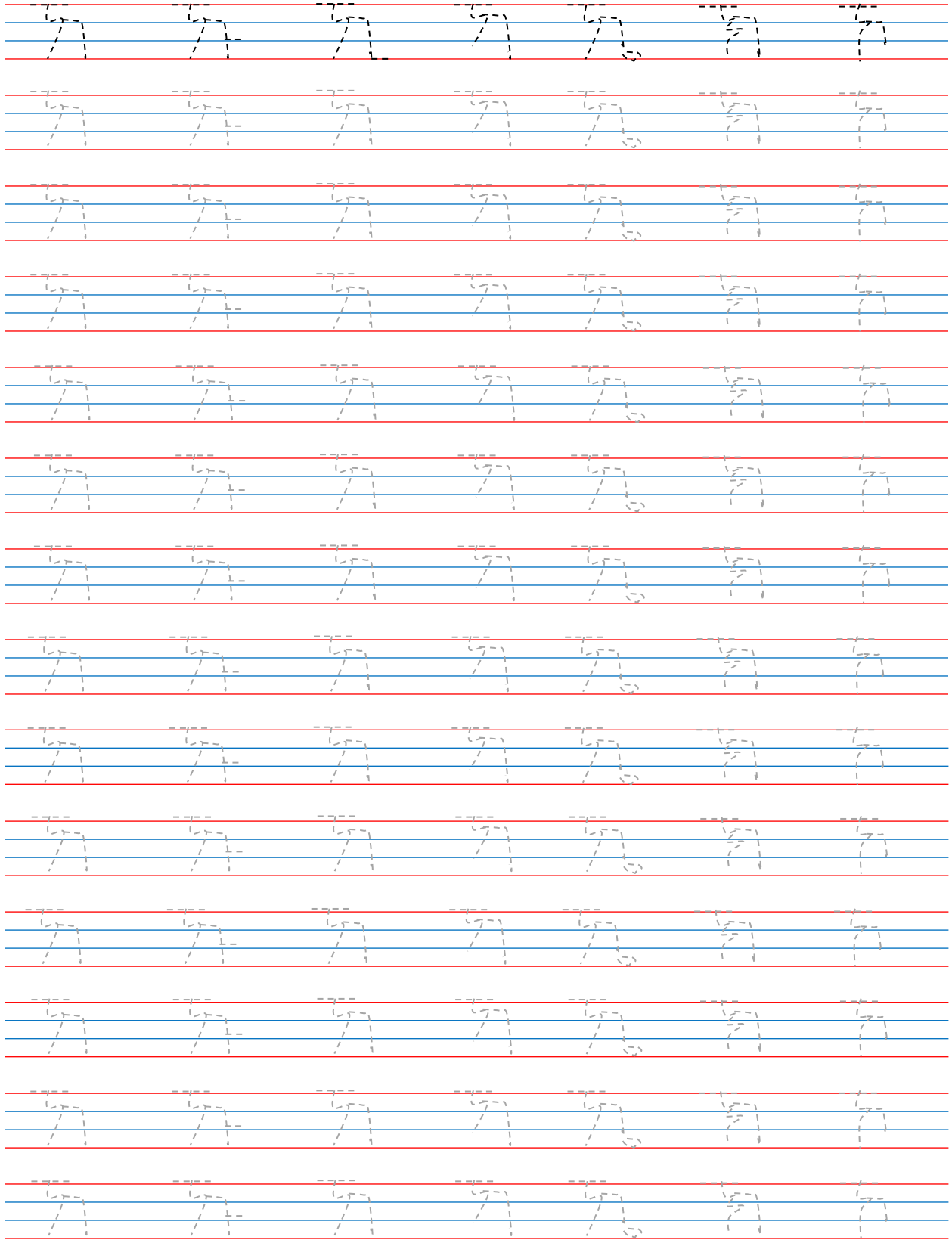
Handwriting practice sheet for Amharic characters ኀ, ኁ, ኂ, ኃ, ኄ, ኅ, ኆ. The page contains 14 rows of handwriting lines. Each row consists of four horizontal lines: a top red line, two middle blue lines, and a bottom red line. The first row shows the seven characters in solid black. The following 13 rows show the characters in dashed lines for tracing. Each row contains seven characters, with the first six characters having a small number '1' and an arrow indicating the starting point and direction of the stroke. The seventh character in each row does not have a stroke guide. The characters are arranged in columns: the first six columns contain characters ኀ, ኁ, ኂ, ኃ, ኄ, ኅ respectively, and the seventh column contains character ኆ.

ከ ከ ከ ከ ከ ከ ከ

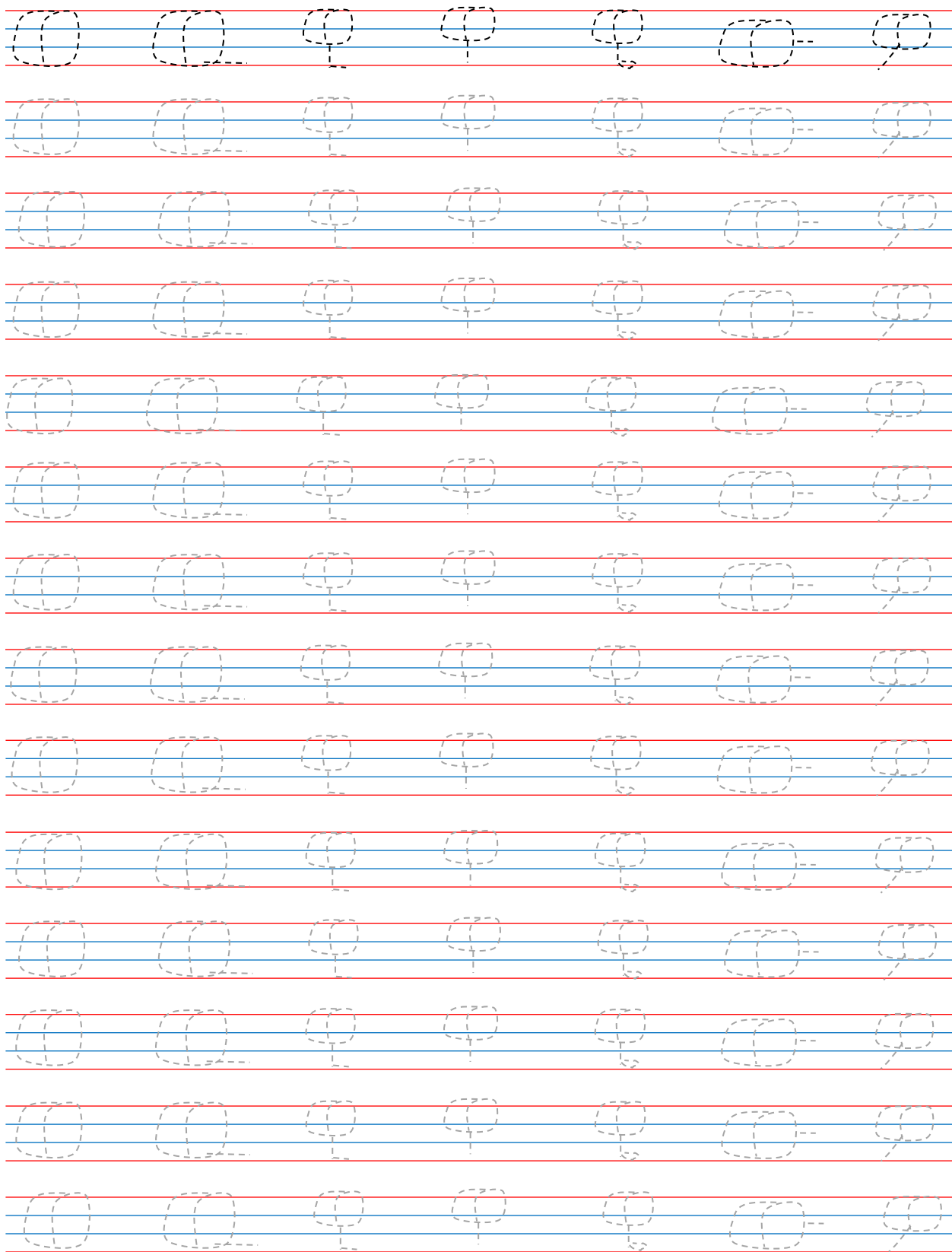




ኸ ኸ ኸ ኸ ኸ ኸ ኸ



ፀ ፑ ፒ ፓ ፔ ፕ ፒ



0 0̄ 0̇ 0̈ 0̉ 0̊ 0̋

0 0̄ 0̇ 0̈ 0̉ 0̊ 0̋

0 0̄ 0̇ 0̈ 0̉ 0̊ 0̋

0 0̄ 0̇ 0̈ 0̉ 0̊ 0̋

0 0̄ 0̇ 0̈ 0̉ 0̊ 0̋

0 0̄ 0̇ 0̈ 0̉ 0̊ 0̋

0 0̄ 0̇ 0̈ 0̉ 0̊ 0̋

0 0̄ 0̇ 0̈ 0̉ 0̊ 0̋

0 0̄ 0̇ 0̈ 0̉ 0̊ 0̋

0 0̄ 0̇ 0̈ 0̉ 0̊ 0̋

0 0̄ 0̇ 0̈ 0̉ 0̊ 0̋

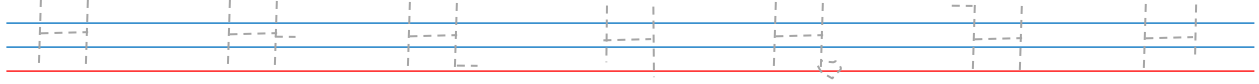
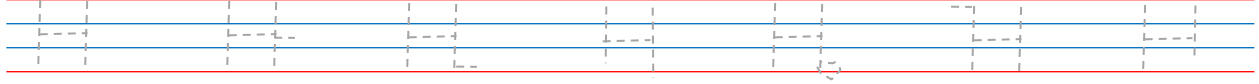
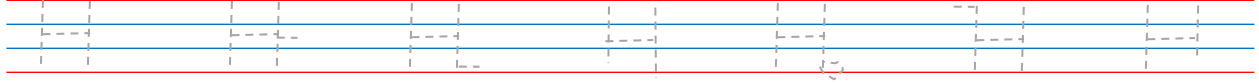
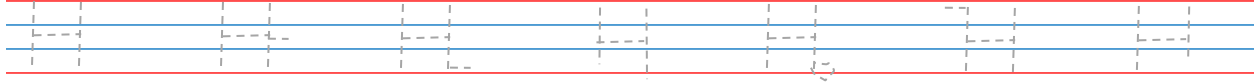
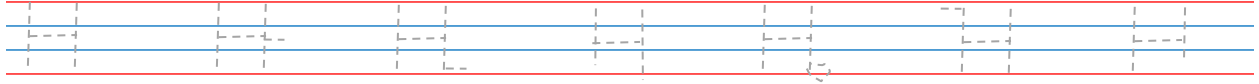
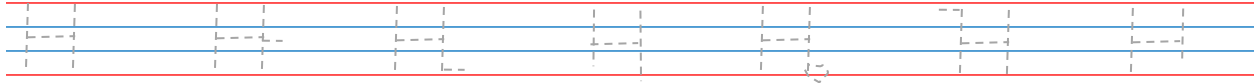
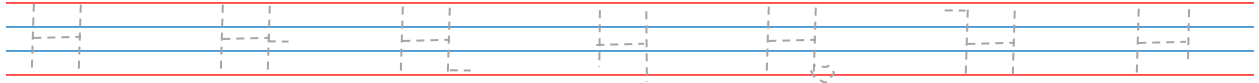
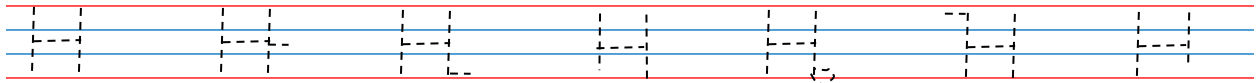
0 0̄ 0̇ 0̈ 0̉ 0̊ 0̋

0 0̄ 0̇ 0̈ 0̉ 0̊ 0̋

0 0̄ 0̇ 0̈ 0̉ 0̊ 0̋

0 0̄ 0̇ 0̈ 0̉ 0̊ 0̋

ነ ነ ነ ነ ነ ነ ነ



ሐ ሐ ሐ ሐ ሐ ሐ ሐ

ሐ ሐ ሐ ሐ ሐ ሐ ሐ

ሐ ሐ ሐ ሐ ሐ ሐ ሐ

ሐ ሐ ሐ ሐ ሐ ሐ ሐ

ሐ ሐ ሐ ሐ ሐ ሐ ሐ

ሐ ሐ ሐ ሐ ሐ ሐ ሐ

ሐ ሐ ሐ ሐ ሐ ሐ ሐ

ሐ ሐ ሐ ሐ ሐ ሐ ሐ

ሐ ሐ ሐ ሐ ሐ ሐ ሐ

ሐ ሐ ሐ ሐ ሐ ሐ ሐ

ሐ ሐ ሐ ሐ ሐ ሐ ሐ

ሐ ሐ ሐ ሐ ሐ ሐ ሐ

ሐ ሐ ሐ ሐ ሐ ሐ ሐ

ሐ ሐ ሐ ሐ ሐ ሐ ሐ

ሐ ሐ ሐ ሐ ሐ ሐ ሐ

ፆ ፇ ፈ ፅ ፁ ፊ ፋ

Handwriting practice sheet for Amharic letters ፆ, ፇ, ፈ, ፅ, ፁ, ፊ, ፋ. The page contains 14 rows of handwriting lines. Each row starts with a solid black letter, followed by a dashed version for tracing, and then a solid version for independent practice. The letters are arranged in columns: ፆ, ፇ, ፈ, ፅ, ፁ, ፊ, ፋ. The handwriting lines consist of a top red line, a middle blue line, and a bottom red line.

ዎ

ዎ

ዎ

ዎ

ዎ

ዎ

ዎ

ዎ ዎ ዎ ዎ ዎ ዎ ዎ

ዎ ዎ ዎ ዎ ዎ ዎ ዎ

ዎ ዎ ዎ ዎ ዎ ዎ ዎ

ዎ ዎ ዎ ዎ ዎ ዎ ዎ

ዎ ዎ ዎ ዎ ዎ ዎ ዎ

ዎ ዎ ዎ ዎ ዎ ዎ ዎ

ዎ ዎ ዎ ዎ ዎ ዎ ዎ

ዎ ዎ ዎ ዎ ዎ ዎ ዎ

ዎ ዎ ዎ ዎ ዎ ዎ ዎ

ዎ ዎ ዎ ዎ ዎ ዎ ዎ

ዎ ዎ ዎ ዎ ዎ ዎ ዎ

ዎ ዎ ዎ ዎ ዎ ዎ ዎ

ዎ ዎ ዎ ዎ ዎ ዎ ዎ

ዎ ዎ ዎ ዎ ዎ ዎ ዎ

የሆ

የሆ

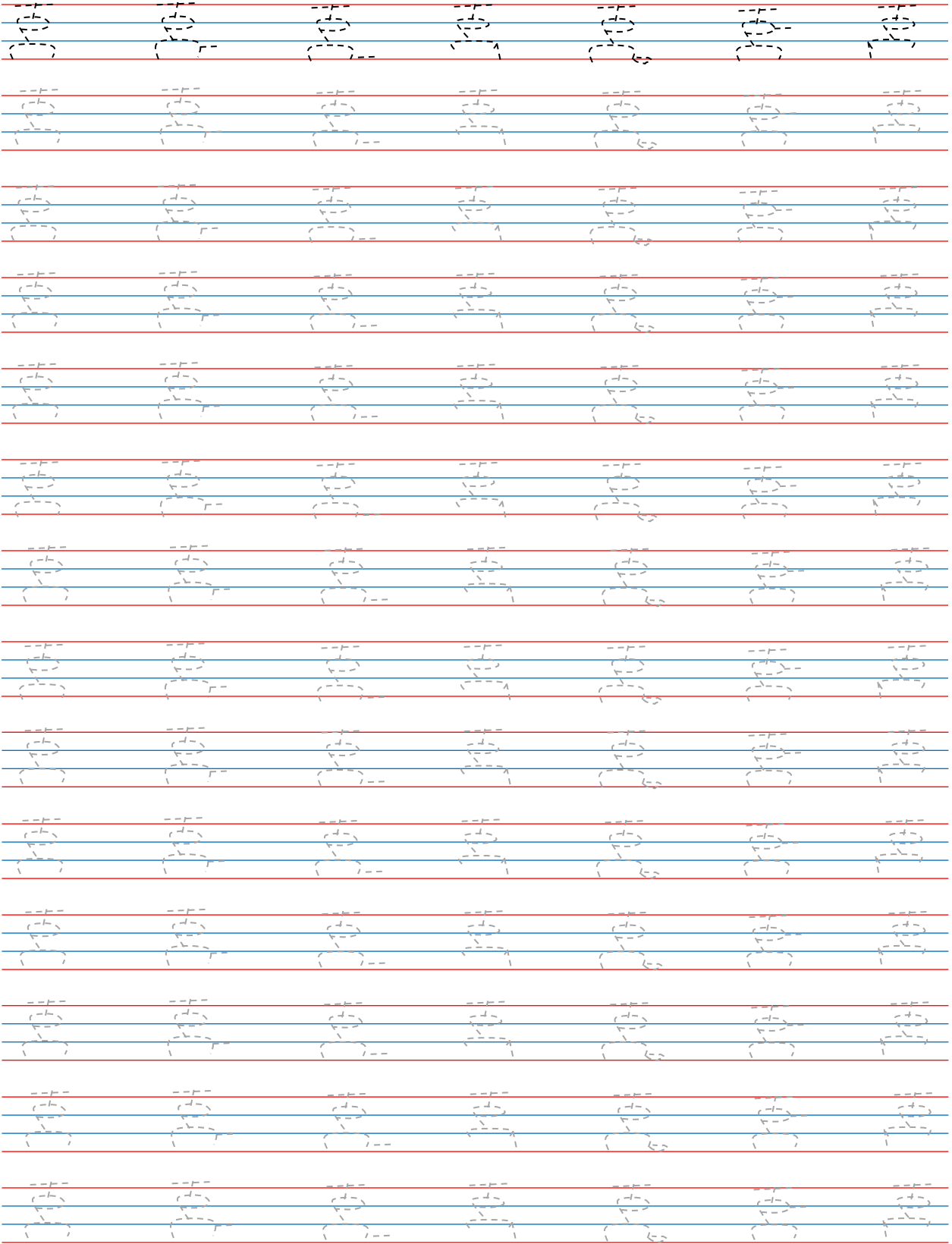
የሆ

የሆ

የሆ

የሆ

የሆ





ገ

ገ

ጊ

ጋ

ጌ

ግ

ገ

Handwriting practice sheet for the Amharic letter 'ገ'. The page contains 12 rows of handwriting lines (red top and bottom lines, blue middle lines). Each row contains seven dashed outlines of the letter 'ገ' for tracing. The first row also includes small arrows and numbers (1, 2, 3) indicating the stroke order for writing the letter.

ጠ ጡ ጢ ጣ ጤ ጥ ጦ

ጠ ጡ ጢ ጣ ጤ ጥ ጦ

ጠ ጡ ጢ ጣ ጤ ጥ ጦ

ጠ ጡ ጢ ጣ ጤ ጥ ጦ

ጠ ጡ ጢ ጣ ጤ ጥ ጦ

ጠ ጡ ጢ ጣ ጤ ጥ ጦ

ጠ ጡ ጢ ጣ ጤ ጥ ጦ

ጠ ጡ ጢ ጣ ጤ ጥ ጦ

ጠ ጡ ጢ ጣ ጤ ጥ ጦ

ጠ ጡ ጢ ጣ ጤ ጥ ጦ

ጠ ጡ ጢ ጣ ጤ ጥ ጦ

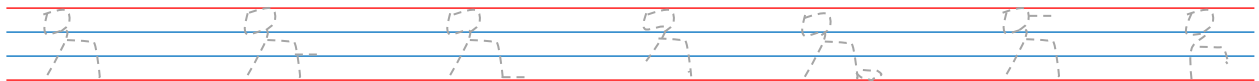
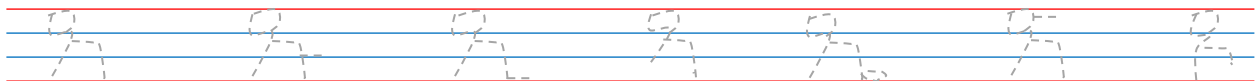
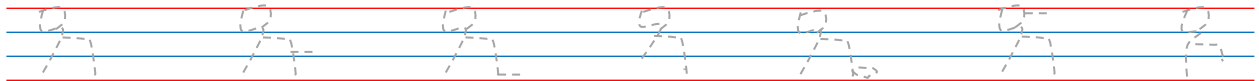
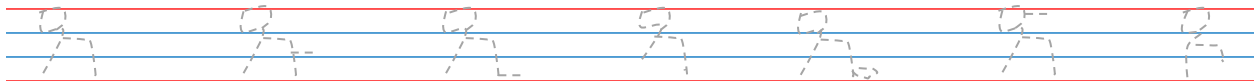
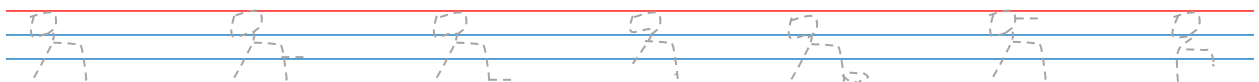
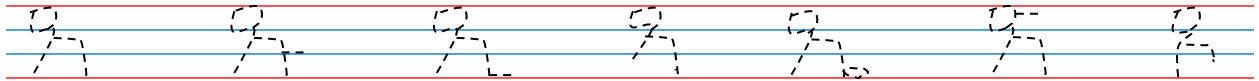
ጠ ጡ ጢ ጣ ጤ ጥ ጦ

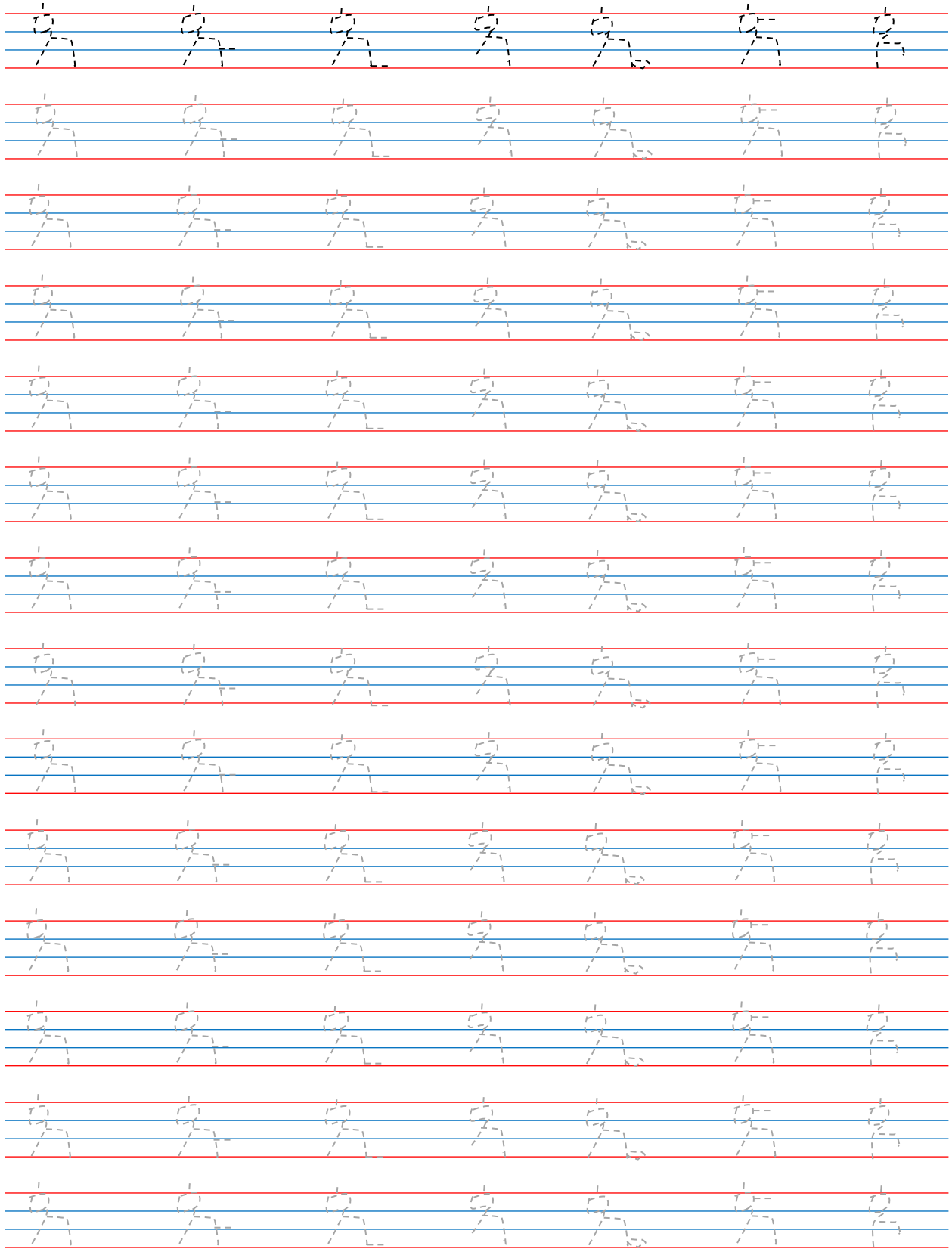
ጠ ጡ ጢ ጣ ጤ ጥ ጦ

ጠ ጡ ጢ ጣ ጤ ጥ ጦ

ጠ ጡ ጢ ጣ ጤ ጥ ጦ

ጩ ጩጩ ጩጩ ጩጩ ጩጩ ጩጩ ጩጩ





ፈ

ፈ

ፈ

ፈ

ፈ

ፈ

ፈ

Handwriting practice section for the Amharic letter 'ፈ' (fa). It consists of 15 rows of handwriting lines (blue top and bottom lines, red middle line). Each row contains seven characters: a solid 'ፈ', a dashed 'ፈ' with a directional arrow indicating the stroke path, a solid 'ፈ', a dashed 'ፈ' with a directional arrow, a solid 'ፈ', a dashed 'ፈ' with a directional arrow, and a solid 'ፈ'. This pattern repeats for each of the seven letters shown in the header: ፈ, ፈ, ፈ, ፈ, ፈ, ፈ, ፈ.

ፕ ፑ ጒ ጓ ፔ ፕ ጘ

Handwriting practice sheet for Amharic letters. The page contains 14 rows of handwriting lines. Each row consists of four horizontal lines: a top red line, a middle blue line, a bottom blue line, and a bottom red line. The first row shows the letters ፕ, ፑ, ጒ, ጓ, ፔ, ፕ, and ጘ in solid black. The following 13 rows show the same letters in dashed lines for tracing. Each letter includes a small arrow and number indicating the starting point and direction of the stroke.

